



City Council Meeting
Park System and Becker Park Master Plans

April 19, 2017



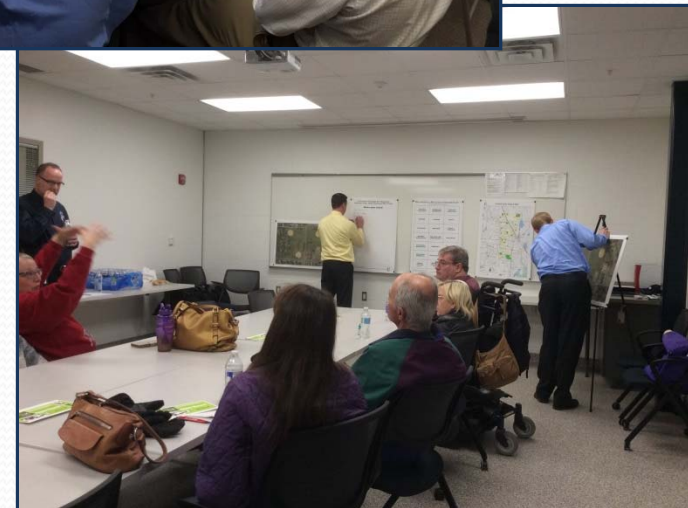
Planning Process to Date

- Inventory of Existing Amenities
- Public Engagement
 - Focus Group Meetings
 - On-line Dialogue (MySidewalk)
 - Public Open House
- Comparison to National Standards
- Classification of Parks - to Guide Amenity Location



Focus Groups

- Active Older Adults
- Mom's Group
- Soccer
- Baseball
- Community Ed. / YMCA
- School District
- Cross-Country
- Lacrosse
- Community Parks (4)
- MAC Park





Ideas Generated Through the Public Process

- Destination Play Area
- Water 'Play' Feature / Fountain
- Large Gathering Area
 - Food Trucks
 - Farmer's Markets
- Performance Area / Great Lawn
- Ice Skating
- Four-season building with restrooms (open more often)
 - Community Parks
 - Destination Parks
- Pickleball



Comparison to National Standards

Sports Amenities	Current Inventory	Minimum Standard	Proposed Number	Add / Remove
Baseball (3-4 acres)	5	4	4	-1
Softball (3 acres)	7	3	3	-4
Rectangle (2 acres)	2	4	4	+2
Basketball (2 net)	14	4	5	-9
Tennis Court	7	5	6	-1
Pickleball	0	n/a	6	+6
Hockey Rink	6	2	4	-2
Sliding Hill	2	n/a	2	0
Warming House	8	n/a	0	-8
'Rentable' Bldg.	0	n/a	4	+4



Classification of Parks

Helps Guide Amenity Location

Passive

(8)

Little to no development

Neighborhood

(13)

Small park within a 10-minute walk

Community

(4)

Large Recreation Facilities

Destination

(2)

Specialized Facilities



Neighborhood Park Amenities

Small Park within a 10-minute walk

Recommendations for addition:

- Small Picnic Shelters at some (*similar to Yunkers*)
- Improve pavement for foursquare, basketball, etc.

Recommendations for reduction:

- Warming Houses
- Hockey Rinks

Retain play areas, open spaces, small sport fields, etc.



Community Park Amenities

Large Recreation Facilities (all proposed fields fit into these parks)

Recommendations for addition:

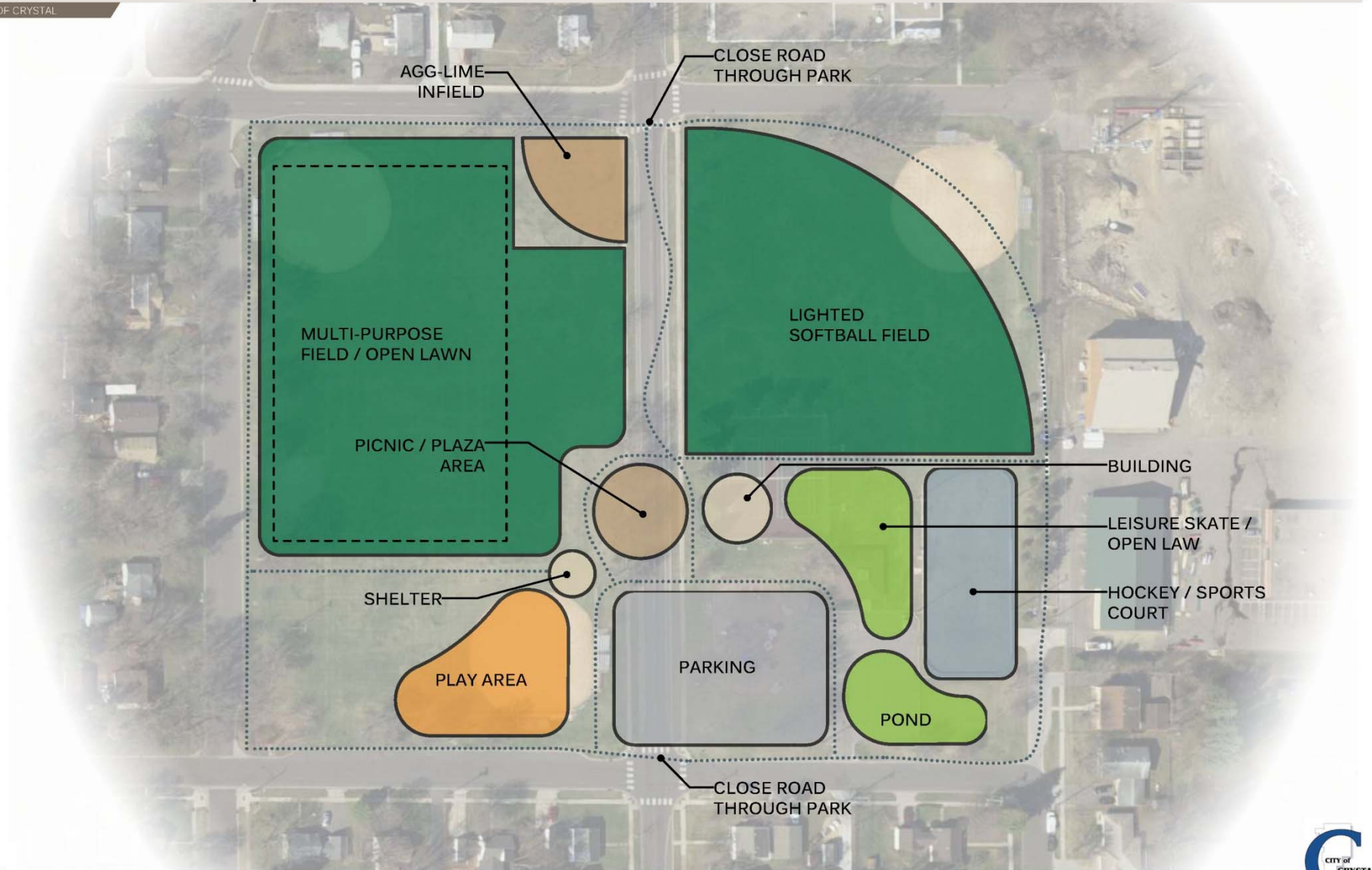
- More full-size Soccer, Lacrosse, Ultimate, etc. (rectangle)
 - *Add lighting and possibly artificial turf to one field*
- Pickleball
- Large Picnic Shelter
- Replace Warming Houses with 4-season Rentable Space

Recommendations for reduction:

- Baseball / Softball
- Road separating Welcome Park (1 Block of Welcome Ave.)

Welcome Park Concept Plan

CITY OF CRYSTAL

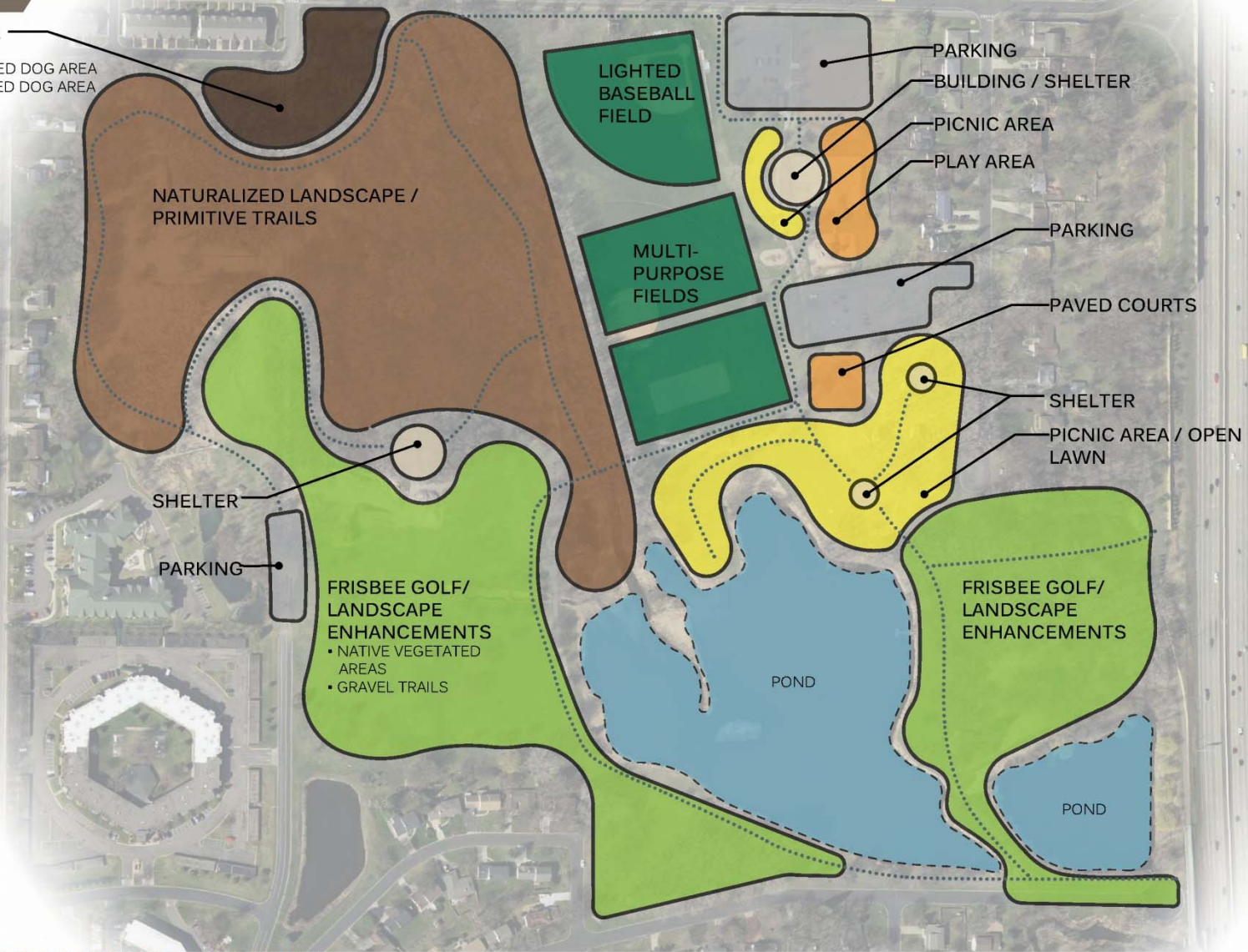


Bassett Creek Park Concept Plan

CITY OF CRYSTAL

DOG PARK

- PARKING
- SMALL BREED DOG AREA
- LARGE BREED DOG AREA



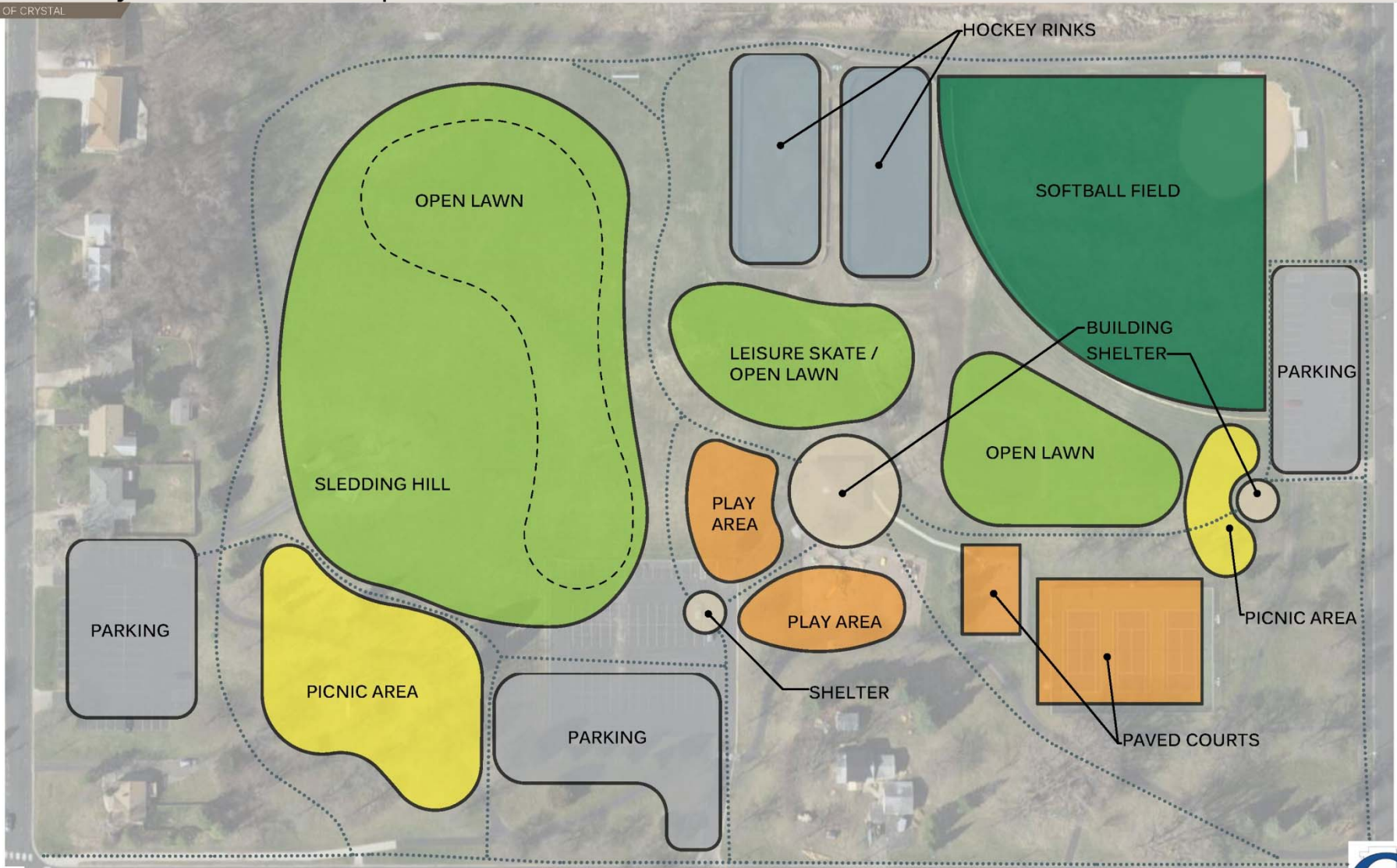
North Lions Park Concept Plan

CITY OF CRYSTAL



Lions Valley Place Park Concept Plan

CITY OF CRYSTAL





Becker Park Amenities

Recommendations for addition:

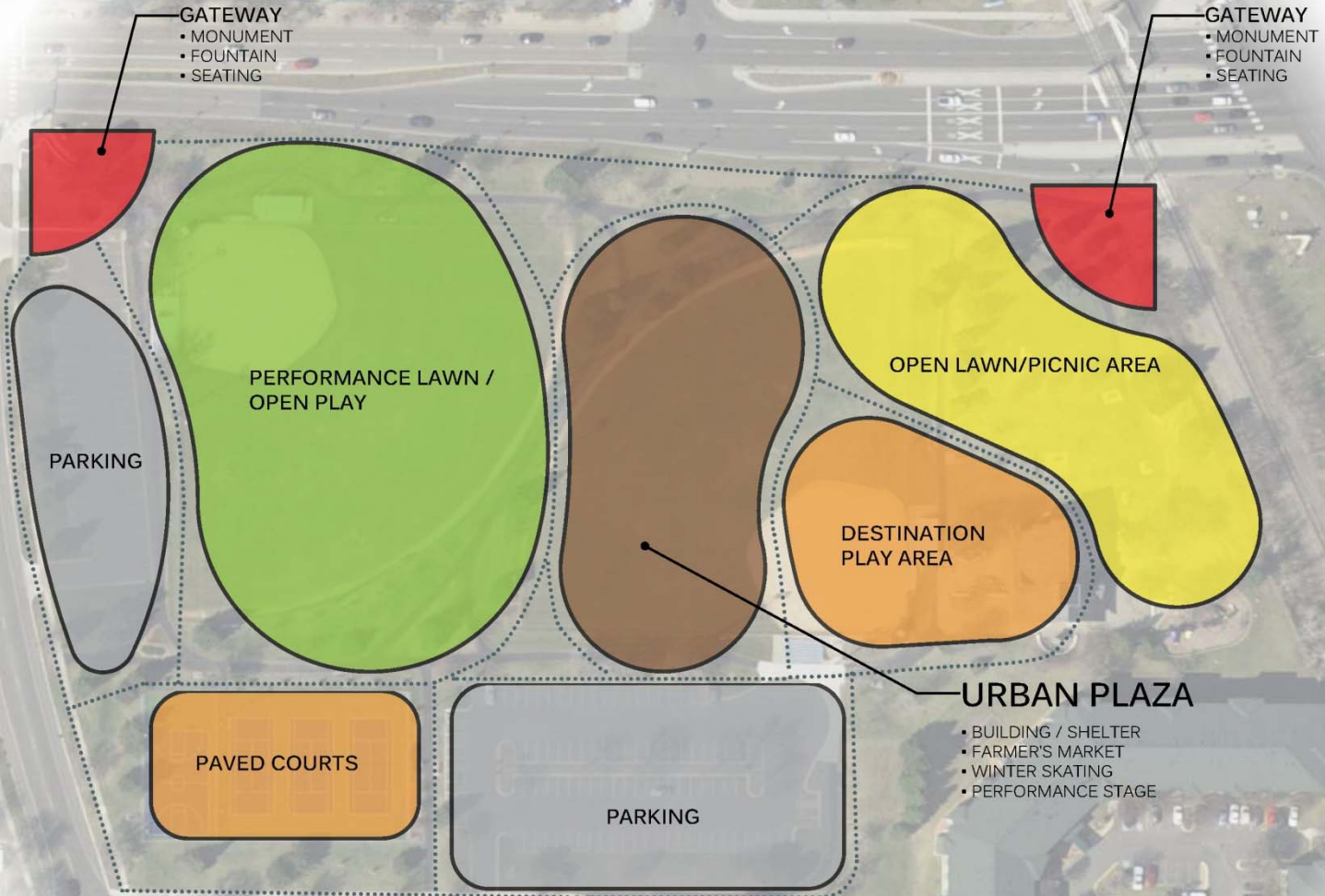
- Destination play area
- 'Non-pool' water feature / kid-friendly fountains
- Central plaza / gathering area - with building
- Ice skating rink - potential for refrigerated ice
- New performance area / great lawn

Recommendations for reduction:

- Softball (no replacement following stormwater project)
- Existing performance stage and building

Becker Park Concept Plan

CITY OF CRYSTAL





MAC Park Amenities

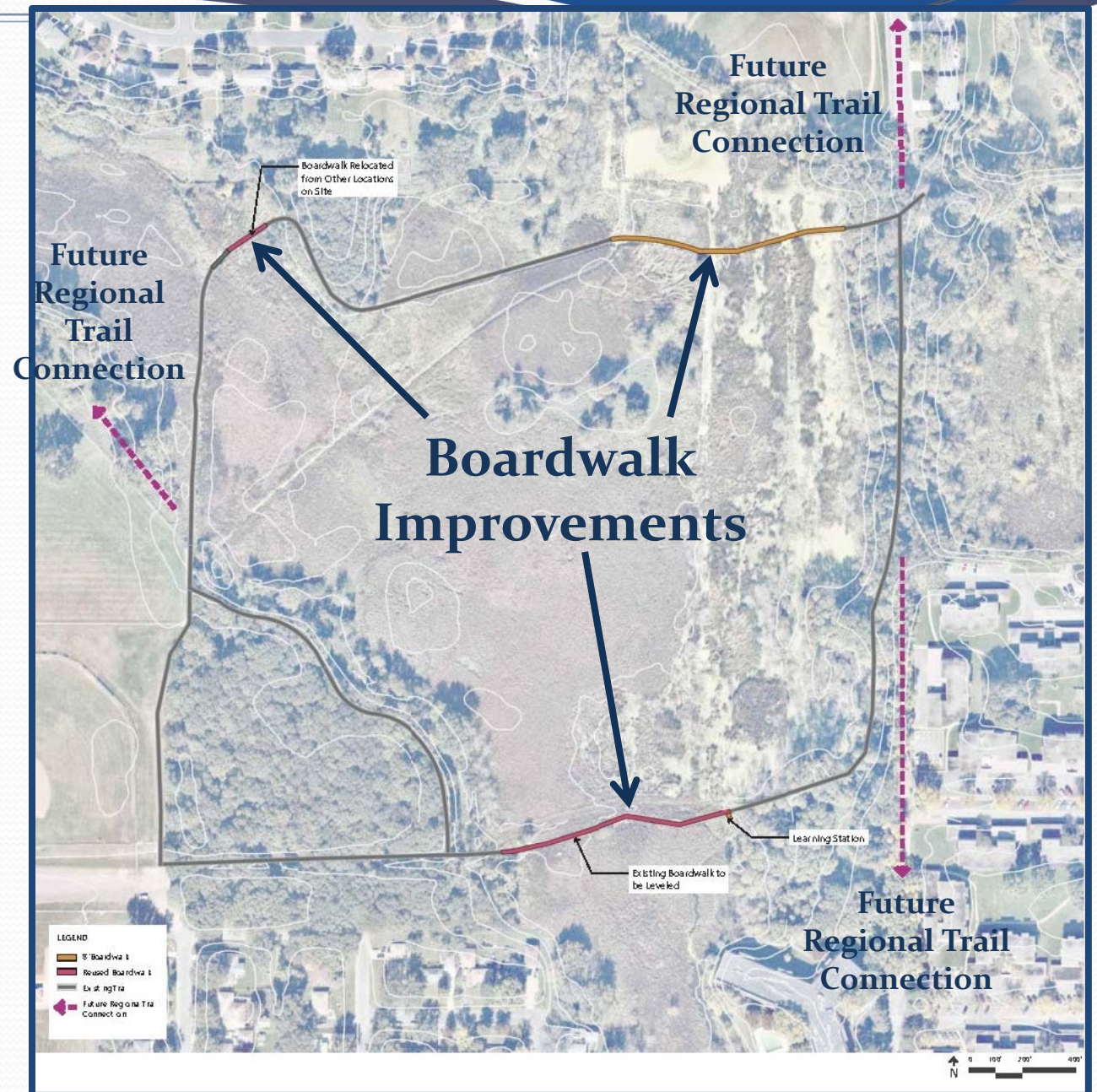
Three Rivers Park District (TRPD) Partnership

- TRPD proposes to create an outdoor education park at MAC
- Project would begin with improving the boardwalk
- Type/cost of boardwalk yet to be determined
- TRPD would put the project into their CIP
- Potential boardwalk construction in 2018

MAC PARK

Three Rivers
Park District
&
City of Crystal

*Potential
Phase 1*





The Next Steps

- Prepare Draft Master Plan Documents *(April – June)*
 - Include clear vision of parks/trails for the City of Crystal
 - Refine concept plans for Becker Park
 - Present draft plans to the public for additional input
 - Present draft plans to PRC & City Council
- Prepare Final Master Plan Documents *(June – July)*
 - Will include cost estimates for proposed elements
 - Will include phasing options



Questions?